



FABRICATED PIPE
INCORPORATED
an MMR company

CRAFTING DURABLE SOLUTIONS WITH PRECISION AND CARE

CORPORATE OVERVIEW

For over a quarter of a century, Fabricated Pipe, Inc. has been dedicated to providing superior value to clients through the production and sale of quality pipe fabrication services.

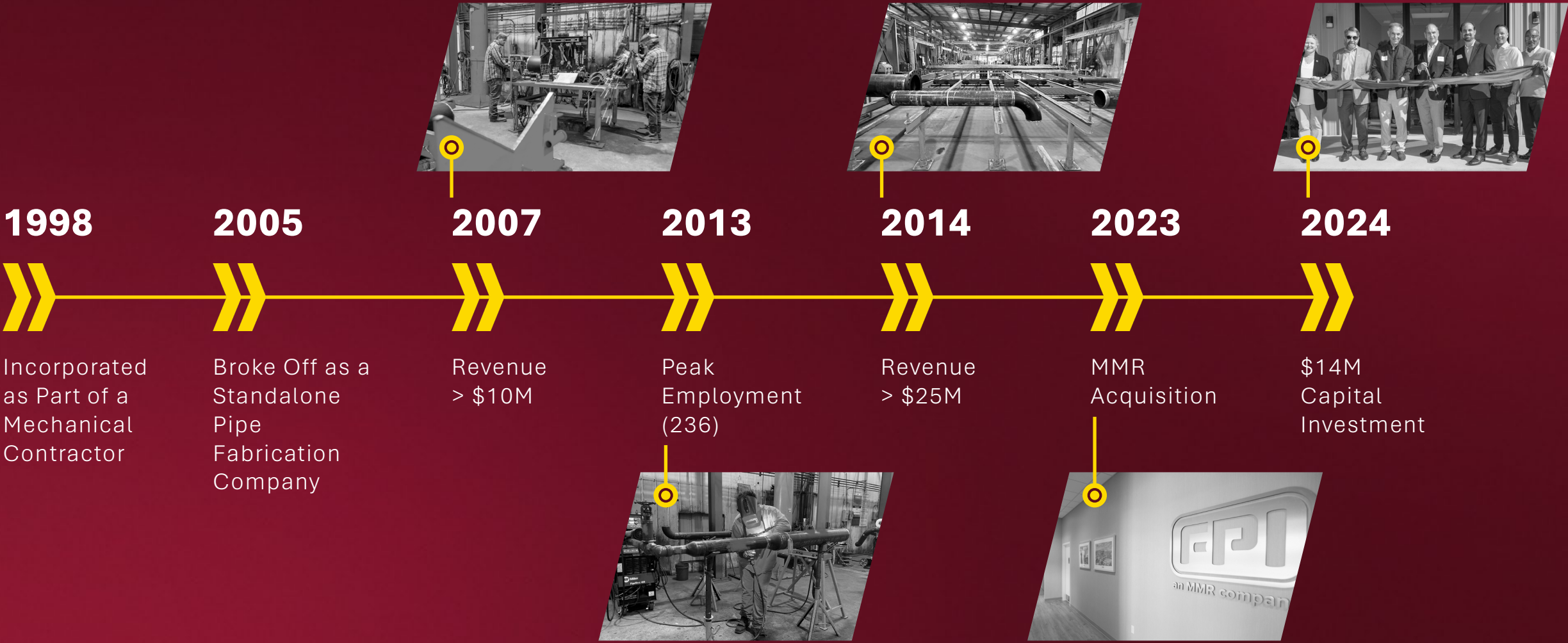




HISTORY

TIMELINE

HISTORY





FACILITIES

» OPERATIONS

- **Shop 1** – 75,000 sq ft
 - 2 Separate Bays
 - (3) 5-ton overhead cranes (Bay 1)
 - (6) 5-ton overhead cranes (Bay 2)
- **Shop 2** – 58,000 sq ft climate-controlled
 - 3 Separate Bays
 - (3) 10-ton overhead cranes (Bay 1)
 - (6) 5-ton overhead cranes (Bays 2 & 3)
- 2,300 sq ft x-ray bldg.
- 4,800 sq ft hydro bldg/power bay. with 10-ton overhead cranes
- (2) 6,000 sq ft covered paint area
- 45 securely fenced acres

75,000-SQUARE-FOOT FABRICATION FACILITY

Fernwood, MS

FACILITIES



» OPERATIONS

- (2) 5 axis plasma profilers
- Plasma Cutting Table (can cut plate up to 2" thick)
- Bead Blasting Cabinet
- Over 40 NEW welding machines
- Onsite coating facilities
- Convenient location for interstate, rail, ocean and air transports
- Automated technology
- Rigid color-coding and segregation program for alloy piping and components
- Permanent rigid separation partition for carbon and stainless-steel fabrication
- State-of-the-art computerized fabrication and tracking systems

ONSITE COATING FACILITIES

FACILITIES



» OPERATIONS

- 25 acres of available laydown area
- 3 acres stabilized and rocked
- Perimeter roadways to access laydown area on property
- Perimeter of laydown area fenced for security
- Property conveniently located 2.3 miles from I-55
- 2.8 miles from CN South Yard rail terminal

LAYDOWN AREA





OUR EXPERTISE

- 1/2" to 120" pipe diameter
- Onsite stress relieving
- ASME "S" and "U" stamp registered
- Welding to B31.1 and B31.3 standards, API1104, API620, API510
- Use of barcoding to track spools
- Pipe wall thickness up to 4"
- All Non-Destructive Examination performed onsite
- Painting/Coating performed onsite



» MATERIALS

OUR EXPERTISE

- Carbon Steel
- Stainless Steel
- Super Duplex SS
- Hastelloy
- Duplex Alloy
- Titanium
- Inconel
- Copper Nickel
- Aluminum
- P-9, P-11, P-22, P-91 Chrome



- RT Rejection Rate of 1.1% YTD (consistently between 0.5% and 1.5%)
- ISO 9001 compliant (maintained certifications for > 14 years (pre-COVID-19))
- 4 full-time Certified Weld Inspectors
- 100% VT and dimensional check on all spools
- Proprietary system for weld and weld inspection tracking





FEATURED PROJECTS

OWNER // CHEVRON CORPORATION PROJECT // BIG FOOT PROJECT

FEATURED PROJECTS



LOCATION //
Ingleside, TX



CLIENT //
Kiewit Offshore Services (KOS) /
Gulf Marine Fabricators



SPOOLS // 12,400



MATERIAL //
Carbon Steel, Low Temp Carbon Steel,
Stainless Steel, Chrome, Titanium, 625
Inconel, 4130, Super Duplex, X65 and
Copper Nickel



OWNER //

UNITED STATES NAVY PROJECT //

US NAVY LPD PROJECT

FEATURED PROJECTS



LOCATION //
Pascagoula, MS



CLIENT //
Northrop Grumman



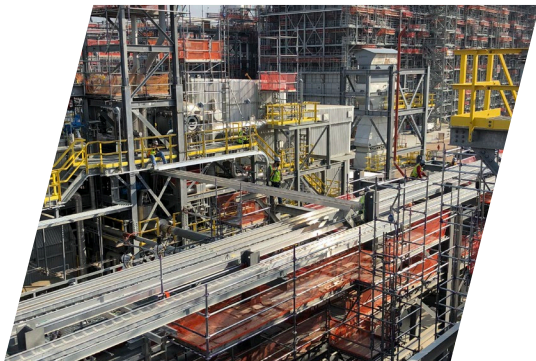
SPOOLS // 19,522



MATERIAL //
Predominantly alloy work – Copper
Nickel, Stainless Steel, Carbon Steel



PROJECT PROFILES



LOCATION //
**SASOL - LAKE CHARLES
CHEMICAL FACILITY**
Westlake, LA



CLIENT //
Fluor



SPOOLS //
6,900 Carbon & Stainless



LOCATION //
**DUKE ENERGY – CITRUS
COUNTY POWER PLANT**
Crystal river, FL



CLIENT //
Fluor



SPOOLS //
9,000 Carbon & Stainless, P11,
P22, Alloy 20



LOCATION //
FS1 EXPANSION
Ft. Saskatchewan, Canada



CLIENT //
DOW



SPOOLS //
1,100 Carbon & Stainless, P11,
P22, LTCS



LOCATION //
**ENOGEX – MCCLURE GAS
PROCESSING PLANT**
Butler, OK



CLIENT //
Burns & McDonnell



SPOOLS //
2,000 Carbon & Stainless



CAPACITY



24 - 60k*

DIAMETER INCHES PER MONTH

300-720k

DIAMETER INCHES PER YEAR

*INCREASE UPON COMPLETION OF ADDITIONAL FACILITIES-Q1 2025



MARKETS SERVED



INDUSTRIAL //

Oil & Gas – Upstream,
Midstream, Downstream



MANUFACTURING //

Pharmaceuticals, Food & Beverage,
Pulp & Paper, Automotive



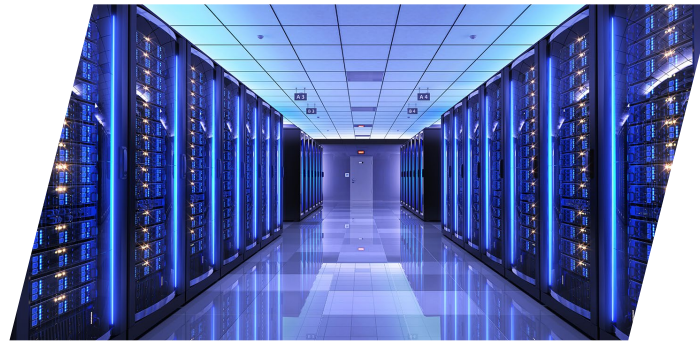
POWER GENERATION/ DISTRIBUTION //

Gas, Turbine & Fossil-Fueled Plants,
Nuclear Power Stations



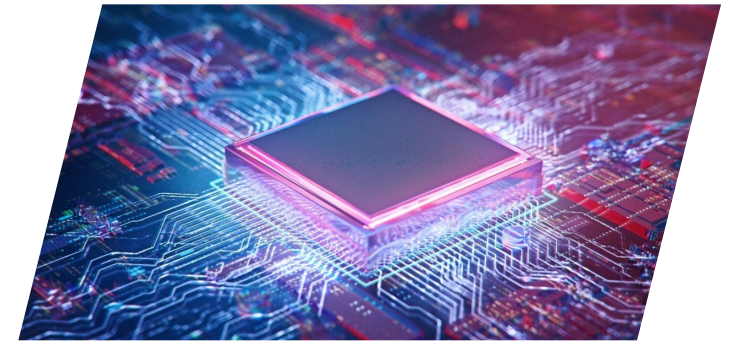
RENEWABLE ENERGY & ENERGY STORAGE //

Energy Storage & Microgrid Technologies



MISSION CRITICAL CONSTRUCTION //

Data Centers



SEMICONDUCTOR//

Manufacturing Chips



CLIENT LIST (PARTIAL)



// OWNERS //



Formosa Plastics®



// EPC/GENERAL CONTRACTORS //





FABRICATED PIPE
INCORPORATED
an MMR company

CRAFTING **DURABLE SOLUTIONS** WITH **PRECISION AND CARE**



HEADQUARTERS

11130 Industriplex Blvd, Suite 400, Baton Rouge, LA 70809
(P) 225-293-9375 // www.fabricatedpipe.com